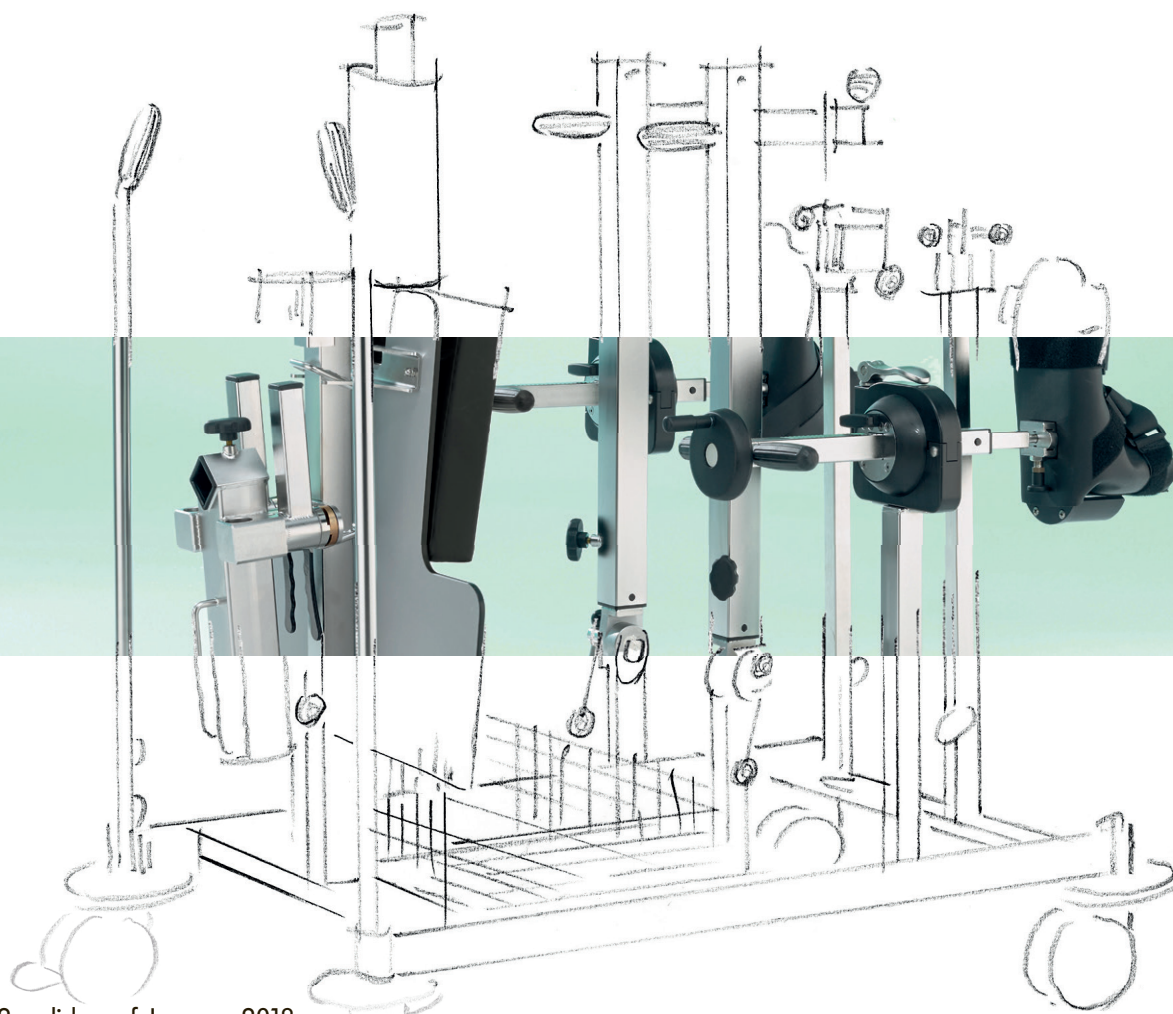




SCHMITZ

A SENSE OF CONFIDENCE

Accessories for DIAMOND and OPX-mobilis[®] operating tables



Contents

Control elements and basic equipment	page	4-8
--------------------------------------	------	-----

General accessories	page	9-14
---------------------	------	------

Accessories for orthopaedics, traumatology, spinal surgery and orthopaedic extension	page	15-19
---	------	-------

Carbon fibre accessories	page	20
--------------------------	------	----

Extension device	page	21-26
------------------	------	-------

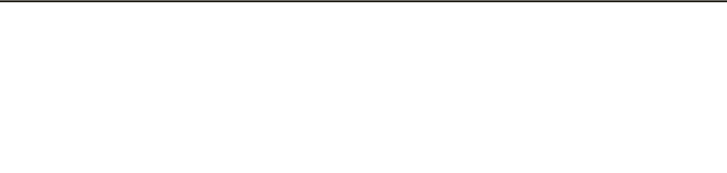
Accessories for head positioning and neurosurgery	page	27-29
--	------	-------

Accessories for Gynaecology and Urology	page	30-32
--	------	-------

Special accessories	page	33
---------------------	------	----

Positioning aids	page	34-37
------------------	------	-------

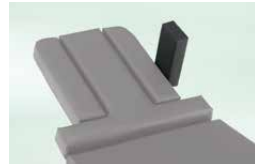
Overview of accessories	page	38-39
-------------------------	------	-------



1



2



3



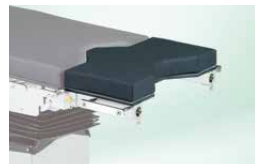
4



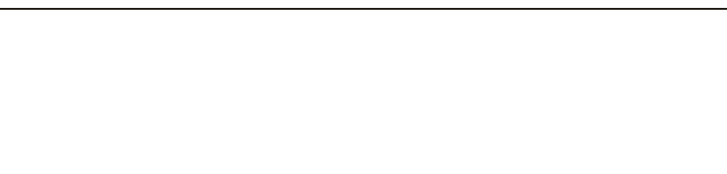
5



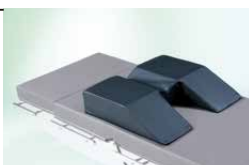
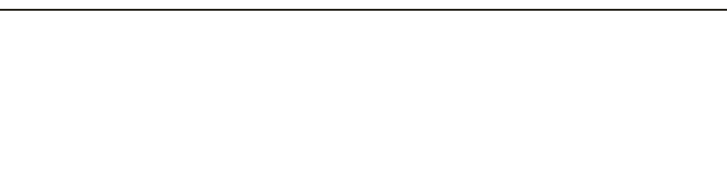
6



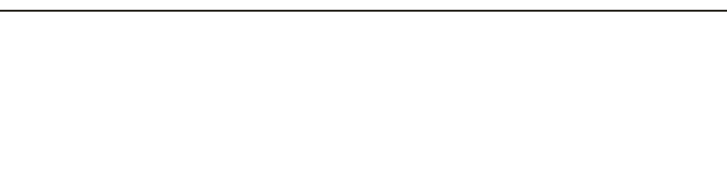
7



8



9



10

Control elements For DIAMOND tables

1

Hand control unit, cable-connected 101.0380.1

plastic casing, sealed against ingress of fluids, cable-connected. Illuminated TFT display indicating all status information of the table. Backlit keyboard for all adjustment functions. For DIAMOND 50/60 models.

Hand control unit, cable-connected 101.0590.1

similar to 101.0380.1, but for DIAMOND 40 models, without electrohydraulic leg section adjustment function. (w/o ill.)

2

Hand control unit, Bluetooth 101.0214.1

plastic casing, sealed against ingress of fluids, wireless Bluetooth connection. Illuminated TFT display indicating all status information of the table. Backlit keyboard for all adjustment functions. Requires Bluetooth preparation 101.0391.1 and charging cradle 101.0356.0, 101.0357.0 or 101.0358.0! For DIAMOND 50/60 models.

Hand control unit, Bluetooth 101.0591.1

similar to 101.0214.1, but for DIAMOND 40 models, without electrohydraulic leg section adjustment function. Requires Bluetooth preparation 101.0391.1 and charging cradle 101.0356.0, 101.0357.0 or 101.0358.0! (w/o ill.)

3

Foot control, cable-connected 101.0206.1

Cast aluminium casing, sealed against ingress of fluids, antiskid, cable-connected. For all table adjustment functions analogous to its hand-held control. Backlit TFT display for easy navigation, control panel illuminated by LEDs in the foot bar (for MIS). Activation key and "Return to zero" key. Can be connected to the table at the same time as the hand-held control unit. Requires preparation for foot control 101.0397.0! For DIAMOND 50/60 models.

Foot control, cable-connected 101.0359.0



for DIAMOND 40 models, similar to 101.0206.1, without electrohydraulic leg section adjustment function. Requires preparation for foot control 101.0397.0! (w/o ill.)

Preparation for cable-connected foot control 101.0397.0

Preparation of DIAMOND operating table for use of a cable-connected foot control unit. (w/o ill.)



1



2



3



4

4

Foot control, Bluetooth 101.0216.1

Cast aluminium casing, sealed against ingress of fluids, antiskid, wireless Bluetooth connection. For all table adjustment functions analogous to its hand-held control. Backlit TFT display for easy navigation, control panel illuminated by LEDs in the foot bar (for MIS). Activation key and "Return to zero" key. Can be connected to the table at the same time as the hand-held control unit. Incl. power supply unit for recharging the control unit. Requires Bluetooth preparation 101.0391.1! For DIAMOND 50/60 models.

Foot control, Bluetooth 101.0360.0



for DIAMOND 40 models, similar to 101.0216.1, however without electrohydraulic leg section adjustment function. (w/o ill.)

Bluetooth preparation 101.0391.1

Preparation of DIAMOND operating table for use of Bluetooth hand and foot control unit. (w/o ill.)

We recommend to always have the table equipped with the Bluetooth preparation in order to be able to profit from the advantages of the Bluetooth system even at a later date.

The Bluetooth control units for DIAMOND 40 models are only available in conjunction with a cable-connected control unit! Please take this into account when placing your order.



5





6




7

Please provide an appropriate charging cradle for your Bluetooth hand control!

5
Charging cradle, pedestal version 101.0356.0 
 for DIAMOND operating tables, pedestal version, charging cradle for inductive charging of Bluetooth hand control unit, with LED status display, incl. mains adaptor. You can continue using the hand control while it is charging in the charging cradle.

6
Charging cradle, wall mount 101.0357.0 
 same as charging cradle 101.0356.0, but wall-mounted version.

7
Charging cradle, side rail 101.0358.0 
 same as charging cradle 101.0356.0, but version for attaching to side rail.

Basic equipment For DIAMOND operating tables

1

Head plate 101.0017.1

double-adjustment, automatic latching of pad inclination, integrated gas spring for weight compensation, detachable.

Double table top 101.0480.0

for X-ray cassette insertion, for head plate 101.0017.1. (w/o ill.)

2

Leg section 101.0145.1

one-section type, manual folding with gas spring assistance, detachable.

Double table top 101.0490.0

for X-ray cassette insertion, for leg plate 101.0145.1. (w/o ill.)

3

Back section extension, fixed 101.0131.0

to be attached to the short back section, length 280 mm.

Double table top 101.0510.0

for X-ray cassette insertion, for back section extension, fixed 101.0131.0. (w/o ill.)

4

Leg plate 101.0116.1

split type, fold-down, swivelling via latching mechanism, sealed against fluids, integrated gas spring for weight compensation, detachable, with carrying handles.

Optionally without gyn. cut-out.

Double table top 101.0500.0

for X-ray cassette insertion, for leg plates 101.0116.1. (w/o ill.)

5

Back section extension, inclinable 101.0159.0

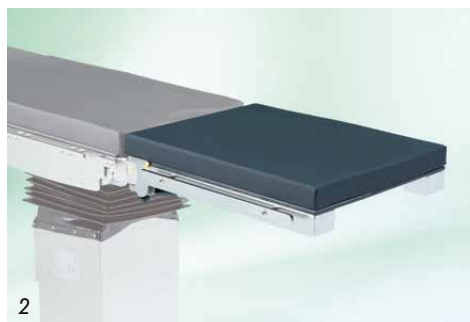
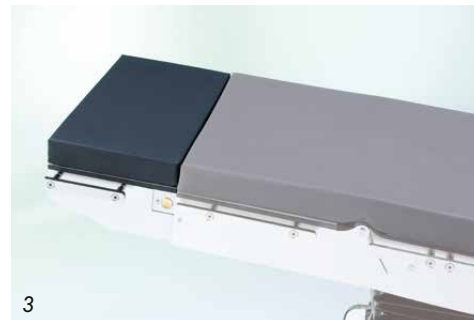
to be attached to the short back section, for stretching patient's upper body in thoracic surgery and abdominal interventions, electromotive downward tilt up to 40°, length 300 mm, including adapted pad for head section. Requires preparation for electr. adj. accessory 101.0238.0!

Preparation for electr. adj. accessory 101.0238.0

Preparation of DIAMOND operating table for electrically adjustable accessory. (w/o ill.)

Double table top 101.0580.0

for X-ray cassette insertion, for back section extension, inclinable 101.0159.0. (w/o ill.)





Front section foldable down to 155°



6

6
Leg section 101.0171.0
 four-part, front part foldable down to 155°,
 swivelling via latching mechanism, detachable.

Optionally without gyn. cut-out.

Double table top 101.0540.0
 for X-ray cassette insertion,
 for leg plates 101.0171.0.
 (w/o ill.)



Closed construction

A closed construction allows easy cleaning, thus meeting the highest demands of hygiene.



Safety lever

A dual safety system for adjusting the leg plate prevents an accidental folding of the lower segment.



Safety handle

The folding function can only be carried out after releasing the safety lever and triggering the safety handle.

Basic equipment

For mobilis operating tables

1

Head plate 101.2580.1

servo-assisted one-hand tilting, detachable at the push of a button, with integrated X-ray cassette tunnel.

2

Head plate 101.2590.1

double-adjustment, servo-assisted weight compensation, detachable at the push of a button, with integrated X-ray cassette tunnel.

3

Leg plate 101.2170.1

split version, manual swivelling and servo-assisted tilting with weight compensation, detachable at the push of a button.

4

Leg plate 101.2180.1

one-section type, manual folding with gas spring assistance, detachable at the push of a button.



General accessories



1
Arm rest 101.0192.0
for an easy and quick positioning of the patient's arm in any position, adjustable in any direction by means of only one star handle, foam pad with antistatic cover, 450 mm long, with arm strap and attachment clamp, stainless steel.

2
Arm rest 101.0019.0
covered foam pad, antistatic, 450 mm long, with arm strap and attachment clamp, tiltable via ball-and-socket joint, stainless steel.

3
Arm rest 101.0109.1
covered foam pad, antistatic, height adjustment range: 80 mm, one-touch swivelling through 360°, turning and tilting up to +/- 35°, incl. stainless steel clamp, 600 x 170 mm (W x D).



4
Anaesthetic frame 101.0012.0
stainless steel, with twist protection, height adjustable, with swivelling clamp 101.0146.0.

5
Anaesthetic frame extension 101.0111.0
for anaesthetic frame 101.0012.0, swivelling and laterally adjustable, length 300 mm.

6
Fastening strap 101.0252.0
padded fastening strap for arm supports, made of especially soft antistatic material without sharp edges, 840 mm long, 50 mm wide.

Fastening strap 101.0262.0
padded fastening strap for immobilising the legs on Göpel-type leg supports, made of especially soft antistatic material without sharp edges, 1,400 mm long.



7
Wristlet 101.0123.0
with stainless steel clamp, washable and exchangeable textile strap, hook-and-loop fastener.

8
Body restraint strap 101.0177.0
with stainless steel attachment elements, washable and exchangeable, hook-and-loop fasteners, 1,350 mm long.

Body restraint strap 101.0455.0 
as 101.0177.0, but each side 1,000 mm long, of which 600 mm hook-and-loop zone. (w/o ill.)

9
Wristlet 101.0137.0
for attachment to anaesthetic frame 101.0012.0, washable and exchangeable textile strap with hook-and-loop fastener, stainless steel attachment.

10
Leg restraint strap 101.0164.0
washable tissue strap with hook-and-loop fastener, for leg fixation, for split leg sections.

General accessories

1

Arm protector* 101.0153.0

comfortable for the OR staff positioned at the side of the OR table, safe protection and anatomically correct positioning of the patient's arm by the protector, which is pushed under the OR table pad and secured by the patient's weight, 400 x 230 x 210 mm (W x D x H).

2

Infusion pole 101.0139.0

stainless steel, upper section with 4 hooks, height adjustable, attachment clamp with ball-and-socket joint.

3

Attachment clamp 101.0018.0

stainless steel, swivel type, with quick release and lock, suitable for poles of 16 to 18 mm diameter.

4

Attachment clamp 101.0117.0

stainless steel, non-swivel type, with release and lock, suitable for square-section poles 20 x 20 mm.

5

Mayo instruments table 101.0166.0

fixing to the side rail by means of attachment clamp, height adjustable 250 mm and swivelling via self-locking ball-and-socket joint, thus always ensuring horizontal positioning of the tray, safe working load approx. 6 kg, dimensions of tray: 450 x 260 mm (W x D).

6

Flexible anaesthetic frame* 101.0125.0

2000 mm long,
2 attachment clamps 101.0146.0 required!

7

Tube holder* 101.0154.0

for secure positioning of ventilation tubes and monitor cables, helix flexible shaft, height adjustable, with robust plastic plate. Requires attachment clamp 101.0146.0!

8

Attachment clamp 101.0147.0

swivel type, for rods diam. 16 to 20 mm, stainless steel.

9

Attachment clamp 101.0132.0

non-swivel type, suitable for poles of 16 to 18 mm diameter and square-section poles of 10 x 25 mm, stainless steel.

10

Attachment clamp 101.0146.0

swivel type, suitable for poles of 16 to 18 mm diameter, stainless steel.





11



13 + 14



12



15



16

11

Shoulder support (pair) 101.0010.0
incl. 2 clamps 101.0117.0, 2 antistatic pads (120 x 200 mm) and 2 attachment bars to adjust pads horizontally and vertically.

12

Lateral support (1 piece) 101.0107.0
simple version, including attachment clamp to side rail, smooth antistatic pad (100 x 215 mm).

13

Rectoscopy/Buttocks support 101.0178.0
adjustable in width, with soft pad, for rectal positioning and spinal surgery.
Requires 2 clamps 101.0018.0 or 101.0146.0!

14

Knee/foot rest 101.0186.0
for DIAMOND operating tables, for rectal and spinal surgeries with the patient in knee/elbow position, serves also as foot rest for laparoscopic surgery, to be fixed to leg section, including 2 attachment clamps 101.0132.0.

Knee/foot rest 101.2070.1

similar to 101.0186.0, but for mobilis Operating tables. (w/o ill.)

15

Handles (pair) 101.0586.0

to be mounted to the head plate, for an easy moving of the operating table.

16

Bracket for body support 101.0121.0
(fig. 1) for attachment of pads 101.0135.0, 101.0151.0, 101.0162.0 and 101.0175.0, allows double swivelling and horizontal as well as vertical adjustment of the supports, includes clamp 101.0117.0.

Body support roll 101.0135.0

(fig. 2) integral foam pad, antistatic, 200 x 65 mm.

Shoulder/lateral support 101.0151.0

(fig. 3) concave foam pad with antistatic cover, 215 x 100 mm.

Back/buttock support 101.0162.0

(fig. 4) with antistatic cover, 200 x 120 mm.

Pubis/sacrum/sternum support 101.0175.0

(fig. 5) foam pad, with antistatic cover, 85 x 85 mm.

General accessories

1

Splash protection 101.0247.0

for DIAMOND Operating tables, transparent plastic cover for the central delivery point at the DIAMOND table base, serves as splash guard during fluid-intensive interventions, e.g. in urology or obstetrics. Serves to minimise the cleaning effort for DIAMOND OR tables.

Dimensions: 826 x 203 x 250 mm (W x H x D)



2

Rack for accessories 101.0120.0

stainless steel square-section tubular frame with 5 rails for attachment of accessories and 1 basket, antistatic swivel castors, overall dimensions: 630 x 580 x 1,430 mm (W x D x H)



3

SCHMITZ Integration Module 101.0420.0

Module with Bluetooth technology to connect the DIAMOND OR table to the OR1™ NEO central control system for operating theatres by Karl Storz company. Bidirectional data transfer, graphics-supported menu navigation with TFT display for all status information of the table, integrated service and information menu, automatic configuration of all table variants.

Please let our experts advise you.

Attention! The relative DIAMOND operating table absolutely has to feature Bluetooth preparation 101.0391.1!

For further information on the Bluetooth functions of the DIAMOND operating table series, please see our catalogue no. 84.

SCHMITZ Integration module 101.0421.0

similar to 101.0420.0, however for integration into CORE central control system by Richard Wolf. (w/o ill.)

4

Rack for storing of head and leg plates 101.0410.0

for DIAMOND operating tables, stainless steel square-section tubular frame with 6 pairs of mounting devices for head and leg plates as well as shoulder plates and gyn./uro. adapters, 2 standard rails and 1 basket.

El. conductive swivel castors.

Total dimensions: 918 x 1,243 x 1,308 mm (W x D x H)



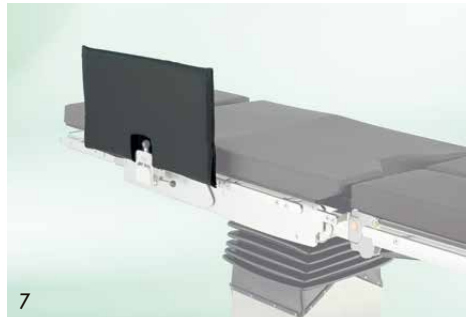


5
Cleaning shuttle 101.0246.0
 for DIAMOND Operating tables, device for underchassis cleaning and disinfecting of tables. The OR table is moved into the device with the table top in its highest position, the frame of the cleaning shuttle is positioned under the seat section of the table. Lowering the table top then lifts the table base off the floor and gives access to its underside for cleaning. Stainless steel frame, plastic guide rails, 2 directional castors diam. 75 mm, 2 antistatic castors diam. 125 mm, individually lockable. 740 x 1,240 x 1,150 mm (W x D x H)
 For DIAMOND operating tables as of model year 03/2014.

6
Side guards (pair) 101.0248.0
 stainless steel, to safeguard the patient during transportation on the OR table, foldable, incl. clamp. The side guard locks automatically when raised. 615 x 300 mm (L x H)

7
Pad for side guards 101.0249.0
 el. conductive, removable, for side guards 101.0248.0.

8
Leg restraint strap* 101.0185.0
 1 pair, with pads, for split leg section, incl. attachment clamps to attach to side rails, length: 1,200 mm.



9
Transfer leg plates (pair) 101.0218.0
 in combination with the attachment device for orthopaedic extension device, for DIAMOND operating tables: also attachment to seat section instead of leg section. Bent stainless steel tube with fabric cover, lightweight construction. For anaesthetization of patients for gynaecological or urological interventions or for interventions using the extension device. Length of leg plates: 875 mm.

10
Foot control 101.6400.0
 for mobilis RC operating table models. Cast aluminium casing, sealed against ingress of fluids, antiskid, cable-connected. For all table adjustment functions analogous to its hand-held control. Activation key and „Return to zero“ key. Can be connected to the table at the same time as the hand-held control unit (factory-provided equipment).



11
Plate for paediatric surgery 101.0239.0
 for DIAMOND operating tables, attachment at the seat section interface, stainless steel frame, with side rails for attachment of accessories, visco-elastic foam mattress with electrically conductive cover 700 x 400 mm (L x W).

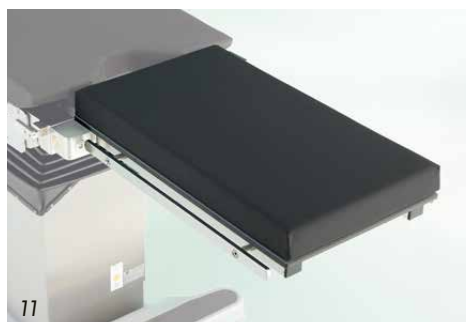
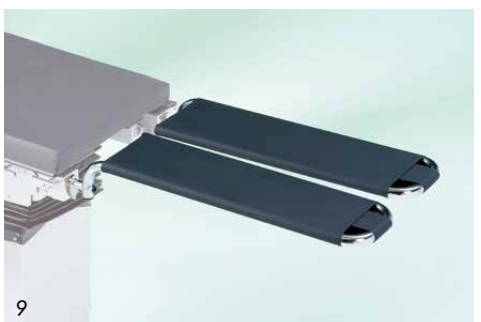


Plate for paediatric surgery 101.0241.0
 as 101.0239.0, however for mobilis operating tables. (w/o ill.)

General accessories



1

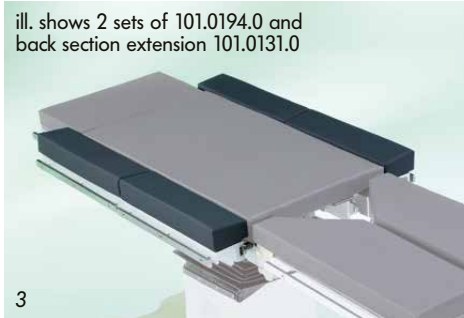
CFRP crossbar 101.2950.0
for mobilis operating tables,
installed at back section, radiolucent.

Potential equalization cable 101.0220.0
3 m long
(w/o ill.)

Potential equalization cable 101.0230.0
5 m long
(w/o ill.)

2

X-ray cassette holder* 101.0255.0
for attachment to side rail, swivelling holder for
positioning an X-ray cassette below the table-top,
incl. clamp.



3

ill. shows 2 sets of 101.0194.0 and
back section extension 101.0131.0

Set of extension pads 101.0194.0
set of 2 foam pads with antistatic cover, 500 mm long,
for seat and back section, attachment to side rails
via quick-locking clamps, with addit. side rails for
accessories. For positioning of adipose patients
as well as positionings in which patients have to
be turned during intervention. New total width
of table-top: 790 mm for DIAMOND and 770 mm
for mobilis operating tables.

Set of extension pads 101.0200.0
similar to extension pads 101.0194.0,
but 300 mm long.
(w/o ill.)

Note!

Required for extension of the DIAMOND OR
table top **without** back section extension:

1 Set of extension pads 101.0194.0,
500 mm long each, for the seat section
1 Set of extension pads 101.0200.0,
300 mm long each, for the short back section

Required for extension of the DIAMOND OR
table top **with** back section extension:
2 Sets of extension pads 101.0194.0,
500 mm long each, for the seat section,
the short back section and the back section extension

Cassette carrier 101.2810.0
for mobilis operating tables,
for X-ray cassettes of max. 350 x 430 mm,
telescopic insertion bar of stainless steel.

Cassette carrier 101.0228.0
similar to 101.2810.0,
for DIAMOND operating tables.
(w/o ill.)




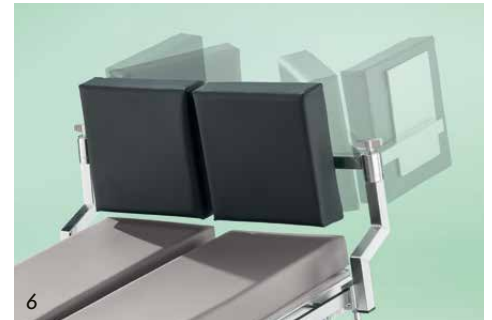
4



5

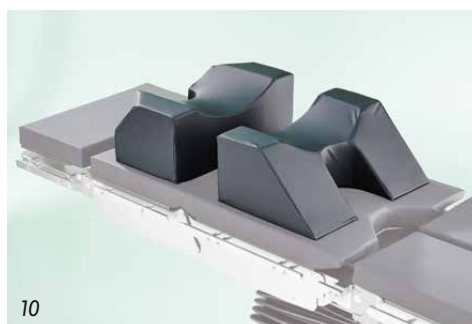
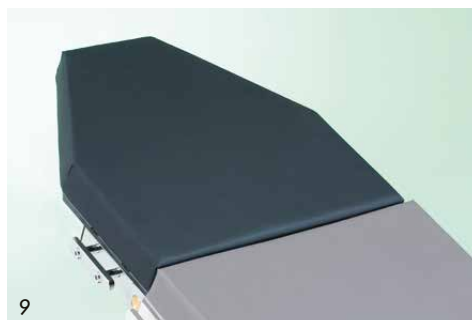
Table extension (pair) 101.0443.0 
cushioned, 255 x 255 mm, for extending
the tabletop, attaches to the side rails of the
operating table leg plates via integrated clamps.

Foot plate (pair) 101.0368.0 
cushioned, 255 x 255 mm, attaches
to the side rails of the operating table leg plates
via integrated clamps.



6

Accessories for orthopaedics, traumatology, spinal surgery and orthopaedic extension



7
Shoulder traction device* 101.0253.0
 System for weightless shoulder suspension, allows for traction settings up to 18.2 kg with a simple turn of the tension adjustment knob. Boom arm adjustable 0° to 90°. Swivel boom head allowing the pulley to align properly with the cord. Fold-down system for easy storage. Incl. 1 sterile arm holder and clamps for attachment to the side rails of the OR table. Max. admissible patient weight: up to 227 kg.

8
Sterile arm trap disposables* 101.0265.0
 for easy attachment to shoulder traction device 101.0253.0. (carton with 6 pcs.)

9
Shoulder plate 101.0210.0
 for DIAMOND 50 and 60 operating table models, for ENT, oral and maxillofacial surgery and ophthalmology, attachment instead of leg plate, with side rails. Requires head rest connector 101.0363.0 or fixture 101.0187.0 and horseshoe head rest 101.0155.0.

Shoulder plate 101.2780.1
 for mobilis operating tables, for ENT, oral and maxillofacial surgery and ophthalmology, attachment instead of leg plate, adjustable with gas spring assistance, with side rails. Requires head rest connector 101.0363.0 or fixture 101.0187.0 and horseshoe headrest 101.0155.0. (w/o ill.)

10
Pad* 101.0015.0
 for intervertebral disc operations, two-sectional for individual adaptation to the patient's body size, radiolucent, antistatic. Thoracic cushion 500 x 250 x 200 mm (W x D x H), pelvic cushion 500 x 340 x 200 mm (W x D x H).

11
Knee positioning device* 101.0212.0
 manually adjustable, with gel pad and fastening strap. Side rail attachment (requires attachment clamp 101.0146.0). Safe working load: 25 kg.

12
Knee arthroscopy support 101.0583.0
 for side rail attachment, incl. attachment clamp and pads, manual adjustment. The diameter is adjustable by hand crank and adapts also for severely obese patients. Safe working load: 40 kg.

13
Knee-elbow positioning device 101.0150.0
 for DIAMOND operating tables, attachment at the back section, for knee-elbow positioning of the patient for spinal surgery, covered foam pad, antistatic, height adjustment 200 mm by means of hand crank, with side rails. Safe working load: 135 kg. 510 x 500 x 120 mm (W x D x H).

14
Lateral support pad (piece) 101.0190.0
 lateral support of patient, attachment to the knee-elbow positioning device 101.0150.0 or knee/foot rest 101.2070.1/101.0186.0 by means of clamp (incl.).

Accessories for orthopaedics, traumatology, spinal surgery and orthopaedic extension

Flexible adjustment of patient's head to right and left



Foldable and detachable mattress segments





1

1

Shoulder surgery plate 101.0244.0
for DIAMOND 50/60 operating table models, for attachment to the electromotive leg section joints, allowing inclination adjustment up to +90°. Free access to the shoulder area thanks to individually fold-down and removable padded segments. Quick removing of segments by pulling a lock pin. Thanks to their hinged attachment to the shoulder surgery plate, the segments can remain at the table during the surgery, eliminating the need of interim storage. Swivelling socket for the head rest joint provides an improved access to the surgical field. 3 positioning options for a lateral body support on both sides of the shoulder surgery plate, incl. 1 lateral body support 101.0245.0 Visco-elastic foam pads with antistatic cover. Requires in addition: head rest connector 101.0364.0 and shaped head rest 101.0266.0.

Shoulder surgery plate 101.0243.0

similar to 101.0244.0, for DIAMOND 40 operating table models, manual adjustment of inclination angle up to + 90° with gas spring assistance. (w/o ill.)

Shoulder surgery plate 101.0242.0

similar to 101.0244.0, for OPX mobilis operating table models, manual adjustment of inclination angle up to + 90° with gas spring assistance. (w/o ill.)

2

Lateral body support 101.0245.0

stainless steel, removable visco-elastic pad with antistatic cover. With quick-locking device, release by means of push button. For attachment to shoulder surgery plates 101.0244.0, 101.0243.0 and 101.0242.0.

3

Shaped head rest for shoulder surgery 101.0266.0

U-shaped helmet with soft pads and 2 flexible lateral pads for different head sizes. Safe positioning of the head by means of 2 soft padded straps, hygienic quick-release catch. Requires head rest connector 101.0364.0 for attachment to the shoulder surgery plate.

4

Shoulder arthroscopy plate 101.2790.1

for mobilis operating tables, attachment instead of leg plate, manual adjustment with gas spring assistance, with individually detachable lateral pads for free access to the shoulders, with side rails. Requires head rest connector 101.0363.0 or 101.0364.0 or fixture 101.0187.0 and shaped head rest 101.0266.0.



2



3



4

Accessories for orthopaedics, traumatology, spinal surgery and orthopaedic extension

1

Arm/hand operating table 101.0108.0

radiolucent CFRP board with covered antistatic foam pad, ergonomic shape for optimal access to the surgical field, 815 x 520 mm (W x D).
Without the support bar, load capacity up to 20 kg.

2

Arm/hand operating table 101.0070.1

radiolucent plastic board with covered foam pad, antistatic, X-ray cassette slot, 700 x 300 mm (W x D).

3

Weinberger hand traction device 101.0163.1

for intramedullary nailing of the upper arm, vertical rod and horizontal linear guide with accessory rail, adjustable by means of locking ball-and-socket joint, for attachment to the humerus positioning device 101.0136.0.

4

Humerus positioning device* 101.0136.0

for intramedullary nailing of the upper arm, vertical rod and horizontal linear guide with accessory rail, adjustable by means of locking ball-and-socket joint, for attachment of the Weinberger hand traction device 101.0163.1 (to be ordered separately).
Requires attachment clamp 101.0146.0.

5

Humerus countertraction post* 101.0152.0

padded, radiolucent.
Requires attachment clamp 101.0146.0.





6

6
Upper arm positioning plate 101.0122.0
 radiolucent, height adjustment approx. 100 mm
 by means of clamp, swivels through 90°,
 foam pad 210 x 260 mm, (W x D).
 Requires attachment clamp 101.0117.0.



7

7
Traction unit 101.0105.0
 for traction of the arm in forearm fractures,
 incl. attachment clamp. Can only be used in
 combination with the Axilla support 101.0257.0,
 the elbow support 101.0258.0 and the
 Weinberger hand traction device 101.0163.1.



8

8
Elbow support* 101.0258.0
 for reduction of elbow fractures,
 incl. clamp Requires Axilla support 101.0257.0,
 Weinberger hand traction device 101.0163.1
 and the Traction unit 101.0105.0.



9

9
Axilla support* 101.0257.0
 padded radiolucent countertraction post,
 incl. clamp, can only be used in combination
 with the elbow support 101.0258.0.



10

10
Leg support* 101.0259.0
 holds the patient's leg for an easier skin disinfection,
 movable foot holder, height adjustable.
 Requires clamp 101.0146.0.



11

11
Meniscus positioning device* 101.0261.0
 radiolucent support roll, flexible positioning of leg
 by using swivel-type clamp, requires clamp 101.0146.0.

Carbon Accessories

1

Carbon plate 101.7151.0
for DIAMOND operating tables,
radiolucent CFRP plate, for mounting to the back
section of the OR table. 1,200 mm long, 1,000 mm
of which radiolucent. With 60 mm SAF mattress,
antistatic, with prop rod.

Safe working load:
with prop rod 225 kg
without prop rod 140 kg

Carbon plate 101.7154.0
similar to 101.7151.0,
for OPX mobilis operating tables.
(w/o ill.)

Safe working load:
with prop rod 225 kg
without prop rod 100 kg

2

Side rail for carbon plate 101.7152.0
stainless steel side rails 25 x 10 mm,
220 mm long, for attachment to the carbon plates
101.7151.0 and 101.7154.0.

3

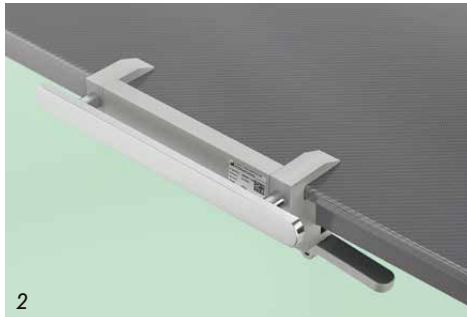
Special arm rest 101.7200.1
with radiolucent CFRP plate, attachment to the side
rails. 700 x 250 mm, 600 mm of which radiolucent.
Can be loaded up to 25 kg. Swivelling horizontally
with interlocking system and handwheel.
25 mm SAF pad, antistatic.

4

Special leg plate 101.7050.1
for mobilis operating tables, 2-section,
with radiolucent CFRP plate, for attachment
at seat section. Length: 850 mm, of which 730 mm
radiolucent, extendable by 250 mm by means
of attachable laminate plates. Width: 2 x 250 mm.
Can be loaded with up to 30 kg each. Inclination
and spreading by means of interlocking system and
clamping levers. 60 mm SAF mattress, antistatic.



1



2



3



4

Extension device



Hip arthroscopy

The extension device is characterized by its user friendliness and its extended range of applications.

Complex surgical interventions such as hip arthroscopies can be carried out more efficiently thanks to a newly-developed traction unit and useful improvements in the accessories field.

A new special traction boot secures the patient's foot safely under traction in any required position.

A countertraction post with extra padding reliably prevents pressure and nerve damages.

A novel wedge clamping allows an optimized continuous swivelling of the extension bars.

1 The shape of the seat section facilitates disinfecting the surgical field.



Hip arthroscopy



The extension device in detail

An innovative ball clamping with integrated extension unit assists the operator in the exact adjustment of the surgical site for hip arthroscopy and in the precise repositioning of fractures of the lower extremities.

1
Clear markers at the extension device for a safe operation at all times.

2
Simple fine tuning and intraoperative adjustment as well as monitoring of the required extension forces are possible at all times thanks to the scaling at the traction mechanism.

3
Simple and quick mounting to the operating by means of the mounting arbor.



Ball clamping



Extension unit



1



2



3



3

Mounting arbor DIAMOND

Extension device



Accessories for orthopaedics, traumatology, spinal surgery and extension

For treatment of all kinds of lower limb fractures.

Essential features:

- Fast, simple and secure attaching of the device to the DIAMOND and mobilis operating tables
- modular structure for optimal range of application
- unobstructed access to the lower limbs for X-ray image intensifier and complete transillumination of the two axes
- well-devised accessories for comfortable and precise positioning of the patient
- disinfectant-proof stainless-steel construction

Extension device 101.0270.0

extension bars with form-locking double joints for swivelling and height adjustment. Joint in the bar can either be adjusted horizontally or vertically for optimal X-ray accessibility. Shiftable traction units mounted on the extension bars; tilting, swivelling and rotation joint. All metal parts are made of electropolished stainless steel.

Requires mounting fixture, positioning plate with pad and mounting arbor as described on page 24!

Complete with basic accessories:

2 extension bar supports,
2 foot plates for adults,
2 traction boots for adults,
1 countertraction post for dorsal position, adjustable,
total weight: 46 kg.

Extension device

1
Mounting fixture 101.0110.0
for all DIAMOND operating table models,
to attach the extension device 101.0270.0.


Mounting fixture 101.5250.0
similar to 101.0110.0, but for mobilis operating tables
without longitudinal shift function.
In mobilis table models with longitudinal shift function
the mounting fixture is already included.
(w/o ill.)

2
Mounting arbor 101.0250.0
for DIAMOND operating tables **with longitudinal
shift function.** Required for mounting of extension
device 101.0270.0 in combination with mounting
fixture 101.0110.0.

Mounting arbor 101.0260.0
similar to 101.0250.0, but for DIAMOND operating
tables **without longitudinal shift function.**
(w/o ill.)

3
Mounting arbor 101.0251.0
similar to 101.0250.0,
but for mobilis operating tables.

4
**Positioning plate for dorsal position
101.0491.0**
narrow version, incl. pad, for positioning the
patient's pelvic section on the extension device.

5
**Positioning plate for lateral position
101.0324.0** 
large version, incl. pad, for positioning the
patient's pelvic section on the extension device.

6
Transport trolley 101.0290.0
Trolley for transportation and storage of the
extension device split into separate modules.

7
Transport trolley 101.0221.0
similar to 101.0290.0, but for transportation and
storage of the fully mounted extension device.

8
**Length adaptor for extension device
101.0240.0**
stainless steel, lengthens or shortens the extension bar
by 265 mm, allowing an adaptation of the bar to
extremely tall or small patients.



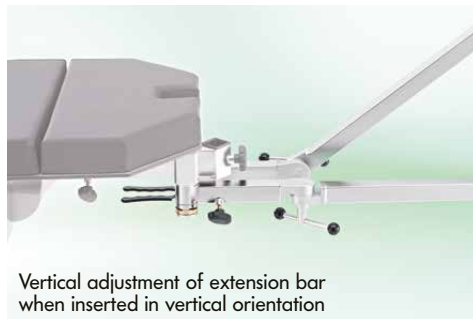
Standard accessories



Extension bar (horizontal or vertical insertion)



Horizontal swivelling of extension bars



Vertical adjustment of extension bar when inserted in vertical orientation



Adjustable countertraction post for dorsal position

Further accessories



9



10

9
Pelvis plaster adapter with pelvis support 101.0340.0

10
Countertraction post for lateral position 101.0350.0
for lateral patient positioning, radiolucent.

11
Kirschner wire device* 101.0165.0
for extensions using Steinmann pins.

12
Transfer leg plates (pair) 101.0218.0
attachment to seat section with mounting for extension device, for DIAMOND operating tables: also direct attachment to seat section instead of leg sections. Bent stainless steel tube with fabric cover, lightweight construction. For anaesthetization of patients for gynaecological or urological interventions or for interventions using the extension device. Length of leg plates: 875 mm.

13
Side rail extension (pair) 101.0193.0
at the seat section, for attachment of a Göpel-type leg support 101.0115.0 using radial setting clamp 101.0146.0.



11



12

14
Traction device for tibial fractures 101.0280.0
countertraction post for lower leg, height adjustable and detachable. Tiltable by means of a gear rim joint.

15
Condyle fixation 101.0254.0
for a precise fixation of the knee, asymmetrically suspended disks for an individual adjustment. Can only be used in combination with the Traction device for tibial fractures 101.0280.0.

w/o ill.:
2 foot plates for children 101.0201.0
2 traction boots for children 101.0205.0



13



14



15

Extension device



1 Telescopic rod for suspension of vertical isolation drapes for mounting e.g. to 2 drip-feed stands



1



2

1 **Telescopic rod* 101.0224.0**
for suspension of vertical isolation drapes,
mounted to 2 vertical poles by 2 universal clamps,
telescopic rod adjustable from 1,500 to 2,800 mm.

2 **Pad for hip arthroscopy 101.0320.0**
for use in hip surgery, to slip onto the
countertraction post. Height 240 mm, diam. 230 mm.



3

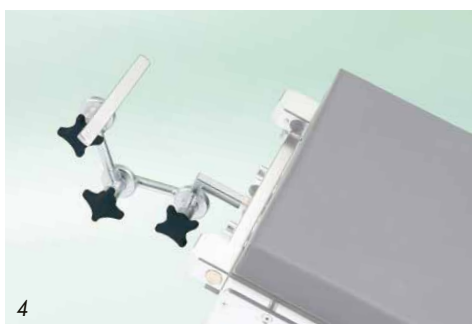
3 **Special shoe for hip arthroscopy* 101.0310.0**
("Rotex" shoe), permanently positionable shoe for
stabilization of the foot in hip and accident surgery,
anatomically shaped carbon inner shoe, with
quick-lock closures, disposable inner shoe 101.0330.0
not included!



4


4 **Disposable inner shoe (piece)* 101.0330.0**
for use with special shoe for hip arthroscopy
101.0310.0.


Accessories for head positioning and neurosurgery



1
Universal adaptor 101.0141.0
 for DIAMOND operating tables, stainless steel, for attachment of universal basic unit 101.0142.0 and head rest connector 101.0363.0 or fixture 101.0187.0.

Universal adaptor 101.2720.0
 similar to 101.0141.0, but for mobilis operating tables. (w/o ill.)

2
Head rest connector 101.0364.0 
 with central square mounting, adjustment by means of handle and ball-and-socket joint, with side rail adaptor 150 mm long, for attachment of shaped head rest to shoulder surgery plate 101.0244.0/101.0242.0/101.0243.0 or shoulder arthroscopy plate 101.2790.1.

3
Head rest connector 101.0363.0 
 height adjustable and inclinable side rail adaptor, 200 mm long, suitable for horseshoe head rest 101.0155.0 or 101.0179.0 [requires universal adaptor 101.2720.0 (mobilis) or 101.0141.0 (DIAMOND)].

4
Fixture* 101.0187.0
 with central square mounting, three-joint adjustment by means of star handles, with side rail adaptor, 275 mm long [requires universal adaptor 101.2720.0 (mobilis) or 101.0141.0 (DIAMOND)].

5
Wrist support* 101.0195.0
 hand support for ophthalmic microsurgery. Height adjustable and reversible. Max. admissible load: 10 kg. For attachment to fixture 101.0187.0.

6
Horseshoe head rest* 101.0179.0
 two-piece, adjustable in width, PU head rest with detachable pad and restraint strap, optimal pressure distribution in prone and supine position. Max. admissible load: 15 kg. [Requires head rest connector 101.0363.0 or fixture 101.0187.0 and universal adaptor 101.2720.0 (mobilis) or 101.0141.0 (DIAMOND)].

7
Horseshoe head rest* 101.0155.0
 one-piece, PU head rest with detachable pad and restraint strap, optimal pressure distribution in prone and supine position. Max. admissible load: 15 kg. [Requires head rest connector 101.0363.0 or fixture 101.0187.0 and universal adaptor 101.2720.0 (mobilis) or 101.0141.0 (DIAMOND)].

8
Horseshoe head rest with one-hand operation* 101.0256.0
 for positioning the head of patients in prone or supine position, continuous one-hand adjustment, retractable adjustment lever, removable pad, incl. 1 fastening strap (requires universal adaptor 101.0141.0 or 101.2720.0).

Accessories for head positioning and neurosurgery

1

OMFS plate 101.0441.0

for DIAMOND tables, attachment instead of leg plate, for procedures in the head region (ophthalmology, oral and maxillofacial surgery, ENT), inclinable by gas spring to $\pm 40^\circ$, head cap featuring double length adjustment for individual adaptation to patient, adjustment range of length presets: 210 mm, adjustment range of fine settings for length: 70 mm, tiltable via ball joint, height adjustable up to 38 mm, detachable shaped headrest.

Intermediate pad 101.0503.0

to support patient's neck when the OMFS plate is extended (from approx. 2/3 pullout). (w/o ill.)

Bolster 101.0501.0

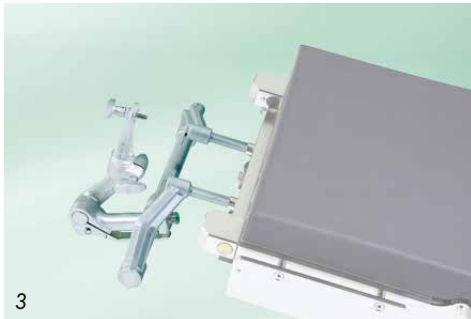
for e.g. hair transplants, attaches to OMFS plate 101.0441.0 instead of shaped headrest. (w/o ill.)

Side rail adapter 101.0502.0

for fitting shaped head rest 101.0179.0 or 101.0155.0 to OMFS plate 101.0441.0 instead of shaped headrest. (w/o ill.)



Scan the QR code and discover the possibilities offered by the OMFS plate!




2
Cross-bar attachment 101.0014.0
stainless steel, for seated patient positioning in neurosurgery, adjustment for different table widths. Requires 2 clamps 101.0018.0!

3
Doro Universal basic unit* 101.0142.0
with double-joint adjustment, attachment to adaptor 101.2720.0 (mobilis) or 101.0141.0 (DIAMOND) or crossbar attachment 101.0014.0. Requires skull clamp adaptor 101.0113.0 or 101.0168.0 and skull clamp 101.0127.0 or shaped head rest 101.0156.0. Upon request, also available in radiolucent material.

4
Doro Skull Clamp adaptor* 101.0113.0
to attach skull clamp 101.0127.0 or shaped head rest 101.0156.0 to universal basic unit 101.0142.0. Upon request, also available in radiolucent material.

5
Doro Skull Clamp adaptor with ball-and-socket joint* 101.0168.0
provides 360° rotation, horizontal inclination up to 90°, to attach Skull Clamp 101.0127.0 or Shaped head rest 101.0156.0 to Connecting piece 101.0142.0. Upon request, also available in radiolucent material.

6
Radiolucent Headrest System* 101.0486.0 
for X-raying, visualizing of blood vessels (DSA) consisting of:
DORO LUCENT® Base Unit
DORO LUCENT® Locking Transitional Member
DORO LUCENT® Transitional Member
DORO® Swivel Adaptor Radiolucent
DORO® Skull Clamp Radiolucent
DORO Lucent® Disposable Skull Pins, Adult (not ill.)
DORO LUCENT® Storage Case (not ill.)

7
Doro Skull Clamp* 101.0127.0
for a secure and stable 3-point fixation of patient's head in supine, prone, lateral or sitting position. With 3 pins for adults. Upon request, also available in radiolucent material.

8
Doro Shaped head rest* 101.0156.0
double-adjustment, U-shaped gel pads, requires Skull clamp adaptor 101.0113.0 and basic unit 101.0142.0.

9
Doro Skull Pins* 101.0180.0
3 pcs. reusable skull pins, paediatric.

10
Doro Skull Pins* 101.0188.0
3 pcs. reusable skull pins, adult.

Accessories for Gynaecology and Urology

1

Leg support (pair)* 101.0016.0

height adjustable and swivelling from the foot end, servo-assisted, plastic support with gel pad for foot and lower leg, adjustable to all directions. Special attachment clamps already included. Max. admissible patient weight: 159 kg.

Leg support (pair)* 101.0264.0

similar to 101.0016.0, however for a patient weight of up to 327 kg. (w/o ill.)

2

Göpel-type leg support Cysto-Lift (pair)* 101.0217.0

height adjustment and adduction/abduction from foot end, servo-assisted, padded Göpel-type lower leg supports, adjustable in any position, incl. attachment clamps.

3

Leg support (Göpel type) 101.0115.0

black integral foam pad, antistatic, with fastening strap, w/o clamp. Stainless steel 18/10, rod of 520 mm length. Requires attachment clamp ref. 101.0018.0 or 101.0146.0.

4

Leg support Göpel type, heavy duty (pair) 101.0219.0

made of stainless steel, adjustable by means of comfort joint, freely movable knee crutch can be locked as required, aluminium knee crutch with removable visco-elastic foam pad, incl. fastening strap, adjustable and free movable leg rest shell, aluminium shell with removable viscoelastic pad, incl. strap, rod of 520 mm length. Max admissible patient weight: 250 kg. Please , w/o clamps. Requires 2 pcs. Clamp 101.0147.0

5

Leg section ModuLeg 101.0570.0

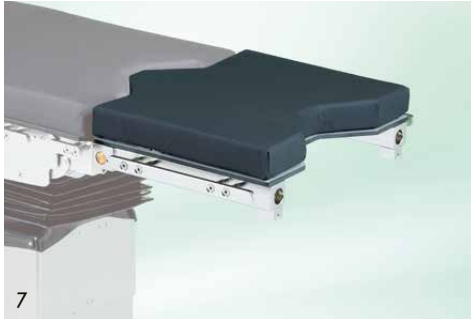
for DIAMOND operating tables, four sections, with lifting and spreading mechanism, quick adjustment from horizontal to lithotomy position, continuous adjustment, removable plates for upper and lower legs granting easy access to the surgical field, length adjustable lower leg plates, removable pads of visco-elastic foam. Göpel-type leg supports 101.0571.0 can be attached instead of the leg plates.

6

Leg supports (pair) 101.0571.0

Göpel-type leg supports for attachment to leg section ModuLeg 101.0570.0.





7
Urological adaptor 101.0197.0
 for DIAMOND operating tables, to extend the seat section by approx. 420 mm, with cut-out for urological interventions, fully radiolucent, with stainless steel side rails 25 x 10 mm and mounting fixtures for leg section. Upon request, also available for tables w/o gyn. cutout.

Double table top 101.0520.0
 for X-ray cassette insertion, for urological adaptor 101.0197.0. (w/o ill.)

Urological adaptor 101.6010.1
 similar to 101.0197.0, but for mobilis operating tables. (w/o ill.)
 Note! An additional leg section cannot be attached to the adaptor.



8
Gynaecological adaptor 101.0204.0
 for DIAMOND operating tables, to extend the seat section by 285 mm, for gynaecological and urological surgery, fully radiolucent, with side rails, cut-out for gynaecology and mounting fixtures for leg section. Upon request, also available for tables w/o gyn. cutout.

Double table top 101.0530.0
 for X-ray cassette insertion, for gynaecological adaptor 101.0204.0. (w/o ill.)


Gynaecological adaptor 101.4010.1
 similar to 101.0204.0, but for mobilis operating tables. (w/o ill.)
 Note! An additional leg section cannot be attached to the adaptor.




9
Rinsing basin with holder 101.0170.0
 for DIAMOND operating tables, stainless steel, attachment to table column, with outlet and plastic hose, dimensions of basin: 350 x 325 x 60 mm (W x D x H).

10
Swivel-mounted rinsing basin with holder 101.0182.0
 stainless steel holder and basin, with outlet and plastic hose, incl. clamp for attachment to side rail. Dimensions of basin: 350 x 325 x 150 mm (W x D x H).

TUR sieve 101.0191.0
 stainless steel, for basin 101.0182.0. (w/o ill.)

11
Gyn instrument shelf 101.0589.0 
 for DIAMOND operating tables, for holding instruments during the procedure, inserts into leg section mount of operating table, dimensions of tray 548 x 288 mm.

Tray for holding gyn instruments 101.0449.0 
 Replacement tray for inserting in gyn instrument shelf 101.0589.0, dimensions of tray 548 x 288 mm.



Accessories for Gynaecology and Urology

1

Elbow rests (pair) 101.0129.0

with stainless steel supports for attachment to uro. adaptor for DIAMOND 101.0197.0, covered foam pads, antistatic, 120 x 200 mm (L x W). Cannot be used in combination with the Basin with gyro flushing 101.0584.0 or the Rinsing basin with outlet 101.0362.0.

Elbow rests (pair) 101.6020.0

similar to 101.0129.0, but attachment to uro. adaptor for mobilis 101.6010.1. (w/o ill.)

2

Basin with gyro flushing 101.0584.0

for attachment to gyn. adaptor 101.0204.0 or uro. adaptor 101.0197.0, large and round stainless steel basin Ø 360 mm, extensible, swivel-type, lockable in any position. Without profiled rim for maximum hygiene. Odour sealing by siphon trap at site (wall/floor system). Manual water inlet manually by means of water tap. Highly flexible outlet hose and connecting piece, Ø 40 mm. According to DIN EN 1717.

TUR sieve 101.0588.0

round, stainless steel, for basin with gyro flushing 101.0584.0. (w/o ill.)

3

Rinsing basin with attachment 101.2400.0

for mobilis operating tables, comfortable attachment on the base of the table. Quick locking for basin on the attachment device, safe screw attachment on the base, basin capacity 7 litres.

4

Rinsing basin with holder 101.2470.0

for mobilis operating tables, stainless steel, attachment to table column, with outlet and plastic hose, dimensions of basin: 350 x 325 x 60 mm (W x D x H).

5

Rinsing basin with outlet 101.0362.0

for DIAMOND operating tables, stainless steel, extractable, with outlet and hose, 1,200 mm long. Attachment to gyn. adaptor 101.0204.0 or uro. adaptor 101.0197.0. Dimensions of basin: 350 x 325 x 100 mm (W x D x H).

6

Fluid Collection System* 101.0365.0

for collecting fluids during hysteroscopy or cystoscopy, flexible frame for holding drainage drapes, incl. 10 drapes 101.0499.0 and attachment clamp for securing to the side rails.

Drainage drapes* 101.0499.0

for use with fluid collection system 101.0365.0 (carton w/10 units).



Special accessories



1



2

1
RotexTable* 101.0560.0
 Positioning device for hip endoprosthesis and arthroscopy. Electric height adjustment of the patient's leg by foot control, manual fine adjustment by rotating, extending, adducting and abducting, for use with extension device 101.0270.0, Safe working load: 220 kg.

Scope of supply:
 RotexTable, RotexShoe (with 2 inner shoes), foot control, charging unit with wall mount, replaceable battery, connecting cable, fulcrum, hand crank, adaptor for extension device 101.0270.0



2



2

2
Allen® Spine System* 101.0160.0
 Positioning device for positioning patients for surgical interventions on the spine, attachment at the side rails of the operating table.
 The Allen Spine System is available in different versions, we will be happy to provide you with more information.

Positioning Aids

Note!
For hospitals in Germany,
SCHMITZ gel positioning pads will be
supplied in blue or green colour.
For hospitals outside Germany,
gel pads will be supplied in black.

1
Gel pad for lateral positioning* 101.0327.0
 for safe lateral positioning, to relieve pressure on the shoulder joint and protect the nerve tracts, for surgical interventions on the hip, on the shoulder or on the kidney, 720 x 500 x 160 mm (W x D x H).

2
Gel heel pads (pair)* 101.0328.0
 to support the Achilles area and relieve pressure on the patients heels during lengthy surgical procedures, 190 x 100 x 70 mm (W x D x H).

3
Gel head ring* 101.0329.0
 open, adult size, provides stability and protection to the patient's face during surgery in lateral position, Ø 200 x 54 mm.

4
Gel head ring* 101.0331.0
 open, paediatric, provides stability and protection to the patient's face during surgery in lateral position, Ø 140 x 34 mm.

5
Gel head ring* 101.0332.0
 closed, adult size, protects the head and ears during surgery in supine position, Ø 200 x 50 mm.

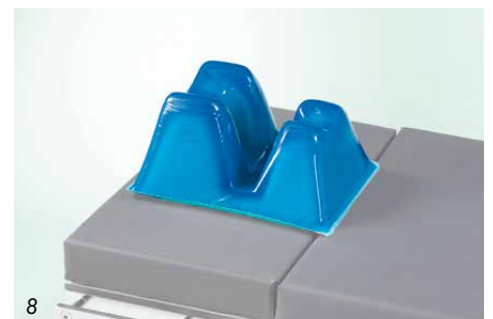
6
Gel head ring* 101.0333.0
 closed, paediatric, protects the head and ears during surgery in supine position, Ø 140 x 34 mm.

7
Gel head rest for prone positioning* 101.0334.0
 adult size, anatomically designed so that the patient's head can comfortably rest face down, outlets for ET tubes on both sides, 280 x 240 x 140 mm (W x D x H).

8
Gel head rest for prone positioning* 101.0335.0
 paediatric, anatomically designed so that the patient's head can comfortably rest face down, outlets for ET tubes on both sides, 260 x 230 x 135 mm (W x D x H).

9
Gel head ring* 101.0336.0
 closed, for infants, protects the head and ears during surgery in supine position, Ø 90 x 20 mm.

10
Gel large prone positioner* 101.0355.0
 eliminates pressure on the abdomen and facilitates easy ventilation and circulation during long cases in prone position, 1,115 x 520 x 140 mm.





11



12

11

Gel operating table pad* 101.0353.0
1,150 x 520 x 10 mm.

Gel operating table pad* 101.0354.0
1,800 x 520 x 10 mm.
(w/o ill.)

12

Gel flat bottom chest roll* 101.0339.0
adult size, 505 x 140 x 110 mm.

13

Gel universal patient positioner* 101.0345.0
150 x 60 x 40 mm.



13

Gel universal patient positioner* 101.0346.0
330 x 70 x 50 mm.

Gel universal patient positioner* 101.0347.0
290 x 100 x 60 mm.

Gel universal patient positioner* 101.0348.0
345 x 120 x 70 mm.

14

Gel arm retainer pad* 101.0343.0
to fit acrylic arm protector 101.0153.0,
157 x 128 x 15 mm.



14



15

15

Gel sacral protector* 101.0344.0
to provide support in the supine and lithotomy
positions, adult size, 450 x 445 x 30 mm.

16

Cushion* 101.0211.0
antistatic covered foam pad, semicircular,
240 x 120 x 475 mm (W x H x L).

17

Plexus cushion* 101.0208.0
or supine patient positioning, designed to prevent
brachial plexus paralysis and to stabilize the head,
440 x 500 x 100 mm (W x D x H).



16



17

Positioning Aids

1

Gel lateral leg positioner* 101.0352.0
for lateral patient positioning, adult size,
650 x 400 x 230 mm.

2

Gel contoured arm board pad* 101.0341.0
contoured, adult size, 510 x 155 x 40 mm.

Gel contoured arm board pad* 101.0342.0
contoured, for adolescents, 395 x 140 x 40 mm.
(w/o ill.)

3

Gel supine head rest* 101.0337.0
adult size, ergonomically shaped to position
the patient's head during eye surgery and other
supine procedures, 275 x 237 x 90 mm.

Gel supine head rest* 101.0338.0
same as 101.0337.0, for adolescents,
275 x 230 x 65 mm.
(w/o ill.)

4

Gel crutch stirrup pads (pair)* 101.0349.0
for Göpel-type leg supports, protect the nerves and
blood vessels in the leg during lithotomy procedures,
370 x 205 x 25 mm.

5

Gel knee pad* 101.0351.0
to protect the knees against pressure damage
in the prone position, adult size, 510 x 150 x 40 mm.





6

6

Vacuum mattress, short* 101.0581.0
for patient positioning in supine, gynaecological or Trendelenburg position. A fixation of the vacuum mattress on the OR table prevents the patient from sliding off the table in extreme head-down tilt (e.g. in laparoscopic sigma resection). Preventing loss of patient body heat thanks to thermo visco system, preventing nerve damage by thermo-visco inserts. The required vacuum can be created using e.g. the suction devices present inside the OR theatre. 1,200 mm x 1,000 mm (W x D)

Scope of supply:
OR vacuum mattress, short. Add'l cushion for anaesthetisation and padded fastening strap.

7

Vacuum mattress, long* 101.0582.0
for patient positioning in lateral position. A fixation of the vacuum mattress on the OR table prevents the patient from sliding off the table in extreme head-down tilt. Preventing loss of patient body heat thanks to thermo visco system, preventing nerve damage by thermo-visco inserts. The required vacuum can be created using e.g. the suction devices present inside the OR theatre. 2,000 mm x 920 mm (W x D)

Scope of supply:
OR vacuum mattress, long. Add'l cushion for anaesthetisation and padded fastening strap.



7



SCHMITZ

A SENSE OF CONFIDENCE

SCHMITZ u. Söhne GmbH & Co. KG

P. O. Box 14 61
58734 Wickede (Ruhr)
Germany (postal address)
Zum Ostenfeld 29
58739 Wickede (Ruhr)
Germany (visiting address)
T +49 (0)2377 84 0
F +49 (0)2377 84 135
www.schmitz-soehne.com
export@schmitz-soehne.de

Technical service, hotline:
T +49 (0)2377 84 549
F +49 (0)2377 84 210
service@schmitz-soehne.de

All articles including correspond-
ing accessories marked with
the CE label meet the standards
for medical devices acc. to
MPG and the EC regulation
93/42/EEC.



The products may only be used
for their intended purpose of use.
Please also observe our operating
manual!

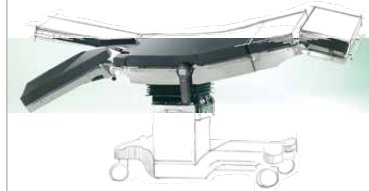


[f /schmitz.soehne](https://www.facebook.com/schmitz.soehne)

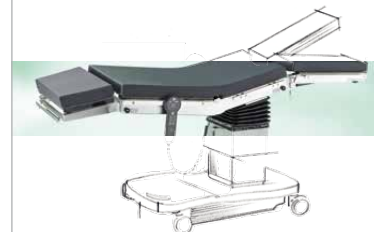


**Information on
our establishments
worldwide can be found
on our website.**

DIAMOND A class of its own



OPX mobilis® Operating Tables for Outpatient Departments and Operating Theatres Unique Flexibility and Reliability



varimed® Furniture for OR theatres and outpatient departments



Our goods and services are to be understood ex works. Deliveries are effected via our authorized partners or branch offices. The company reserves the right to alter the design, construction, dimensions and finish of its products without notice. All relevant dimensions and weights are to be understood as approximate information/data. Due to technical reasons colour deviations are possible. The articles shown in this catalogue are not authorized for sale in the United States. SCHMITZ Catalogue No. 92, 01.2018 GB
Nominal charge 3.00 Euro.

* This product is an article of merchandise, sold under OEM brand name.