

# SO THAT LIFE CAN GO ON

AN AUTOMATED EXTERNAL DEFIBRILLATOR  
MAY TURN LAYPEOPLE INTO LIFESAVERS.  
EVERYWHERE!

HeartSave  
PAD, AED, AS



LIFE

DEATH



# A DECISION FOR LIFE



WHEN EVERY MINUTE COUNTS, PRIMEDIC DEFIBRILLATORS CAN HELP HEARTS STOP MISSING ANOTHER BEAT. EVERYWHERE AND EVERY TIME! AND THE FACT THAT THEY CAN BE USED QUICKLY IS OF DECISIVE IMPORTANCE.

## AN EXCELLENT REPUTATION WORLDWIDE

Mature and safe technology, straightforward operation, high quality and absolute reliability under extreme conditions: these are the unique attributes of PRIMEDIC defibrillators. All over the world, these robust devices have a reputation amongst emergency medical services for meeting the highest safety standards and being ready to use quickly.

## DECADES OF EXPERIENCE

We have been providing medical technology services and manufacturing professional and automatic defibrillators of excellent quality for both professionals and laypeople for 45 years. In close cooperation with hospitals, universities and practical users, we strive to develop new technologies to progressively develop our devices.

## SAFETY DELIVERED BY A CURRENT-CONTROLLED DEFIBRILLATION IMPULSE

As an immediate life-saving measure, the Heart-Save can secure survival in the decisive minutes prior to the arrival of the emergency services. It all depends on these first few minutes: after five minutes, the patient's chances of survival has already fallen to less than 50%. **You simply cannot go wrong!** The device only initiates defibrillation when ventricular fibrillation is actually verified.

**PRIMEDIC. Saves Life. Everywhere.**

# SUDDEN CARDIAC ARREST – EVERY SECOND COUNTS!

## 300,000 PEOPLE DIE FROM HEART FAILURE EVERY YEAR

In Europe, approximately 300,000 people are the victims of sudden cardiac death every year. **It is consequently the leading cause of death – ahead of both cancer and strokes.** This figure could be significantly reduced if public facilities, fitness studios, care homes, companies, training institutes and private households were equipped with automated external defibrillators (Primedic HeartSave PAD, AED, AS). If help is not provided immediately, sudden cardiac death can occur within minutes.

## VENTRICULAR FIBRILLATION CAN AFFECT ANYONE

Ventricular fibrillation can be the cause of sudden cardiac death in early life or even occur without warning at any time. Not enough is known about some of the scientific reasons behind it. Initial care for the patient includes cardiopulmonary resuscitation (CPR). However, this alone will not stop ventricular fibrillation. Ventricular fibrillation can only be effectively stopped by prompt defibrillation – in other words, a current-controlled defibrillation impulse from what is known as an automated external defibrillator (AED).

## GENTLE AND SAFE FOR THE HEART MUSCLE

Biphasic defibrillation technology in the PRIMEDIC HeartSave device range is gentle on the patient's heart muscle. The impulse output stage generates an individualised, gentle, effective and current-controlled defibrillation impulse, without damaging current peaks.



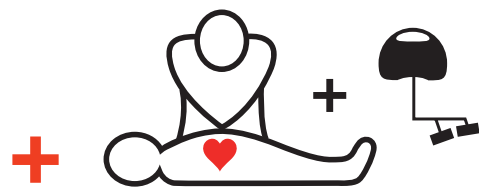
# EARLY DEFIBRILLATION INCREASES CHANCES OF SURVIVAL

## FAST ACTION SAVES LIVES

In conjunction with immediate cardiopulmonary resuscitation, there is only one way of stopping ventricular fibrillation and ensuring the patient's survival: prompt defibrillation. It has been proven that a patient's chance of survival falls by 10% – 12% per minute.

## EASY FOR LAYPEOPLE TO USE

A patient's chances of survival decrease with every passing minute. That's why we have developed our defibrillators for first aiders with laypeople in mind. You can provide professional assistance without any medical training in just a few simple steps. You can't go wrong: **the device only initiates defibrillation when ventricular fibrillation is actually verified.** Simple voice prompts safely guide the first aider through the rescue procedure.



## SUCCESSFUL DEFIBRILLATION -

100-70%

IF DEFIBRILLATION WITHIN  
3 MINUTES



70-50%

IF DEFIBRILLATION WITHIN  
3-5 MINUTES



< 50%

IF DEFIBRILLATION WITHIN  
5-10 MINUTES



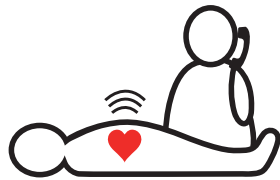
# RESUSCITATION GUIDELINE ACCORDING TO ERC (EUROPEAN RESUSCITATION COUNCIL)

1



UNCONSCIOUS  
PERSON

2



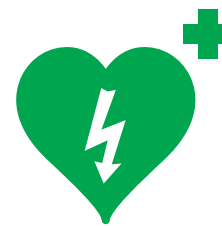
MAKE AN  
EMERGENCY CALL

3



30 COMPRESSIONS :  
2 RESCUE BREATHS

4



FETCH / SEND FOR  
AED

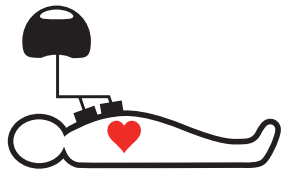
5



30 COMPRESSIONS :  
2 RESCUE BREATHS

CONTINUE 30:2 UNTIL  
AED IS AVAILABLE

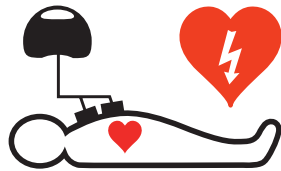
# 6



OPEN AED  
AND PLACE  
ELECTRODES  
DIRECTLY ON THE  
CHEST

FOLLOW AED  
INSTRUCTIONS

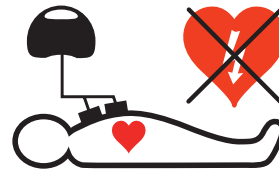
# 7



SHOCK ADVISED

1 SHOCK

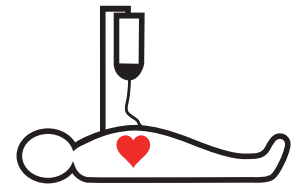
2 MINUTES OF 30:2  
RESUSCITATION  
STRAIGHT AWAY



SHOCK NOT ADVISED

2 MINUTES OF 30:2  
RESUSCITATION  
STRAIGHT AWAY

# 8



CONTINUE UNTIL  
EMERGENCY HELP  
ARRIVES!

# SEMI-AUTOMATIC HeartSave PAD

## 1 SPEAKER

Simple and intuitive thanks to clear voice prompts (monolingual) and a metronome to pace chest compressions throughout the entire defibrillation process.

## 2 PEDIATRIC BUTTON

Adjustment of the device setting for pediatric application

## 3 SHOCK BUTTON

Once analysis is complete and the device has been cleared for use, defibrillation is triggered by pressing the shock button.

## 4 CONNECTOR SOCKET

Connection point for pre-connected electrode cable.

## 5 STATUS DISPLAY

The active status display informs the user about the usability of the device and battery. Automatic self-tests are performed every day.

## 6 BATTERY COMPARTMENT AND ACCESS TO SaveCard

Easy release to replace battery (3 year lifespan / standby) and access to SaveCard. The device automatically stores all resuscitation data on the SaveCard.





# SEMI-AUTOMATIC HeartSave AED

- 1 SPEAKER**  
Simple and intuitive thanks to clear voice prompts and a metronome to pace chest compressions throughout the entire defibrillation process.
- 2 PEDIATRIC BUTTON**  
Adjustment of the device setting for pediatric applicator
- 3 SHOCK BUTTON**  
Once analysis is complete and the device has been cleared for use, defibrillation is triggered by pressing the shock button.
- 4 CONNECTOR SOCKET**  
Connection point for pre-connected electrode cable.
- 5 STATUS DISPLAY**  
The active status display informs the user about the usability of the device and battery. Automatic self-tests are performed every day.
- 6 BATTERY COMPARTMENT AND ACCESS TO SaveCard**  
Easy release to replace battery (6 year lifespan / standby) and access to SaveCard. The device automatically stores all resuscitation data on the SaveCard.
- 7 LANGUAGE SELECTION**  
User instructions are selectable in 4 languages. You can select more than 40 languages.



# FULLY AUTOMATED HeartSave AS

**1 SPEAKER**  
Simple and intuitive thanks to clear voice prompts and a metronome to pace chest compressions throughout the entire defibrillation process.

**2 PEDIATRIC BUTTON**  
Adjustment of the device setting for pediatric application

**3 AUTOMATIC SHOCK DELIVERY**  
Instead of a shock button, a warning will appear on the defibrillator telling the user not to touch the patient.

**4 CONNECTOR SOCKET**  
Connection point for pre-connected electrode cable.

**5 STATUS DISPLAY**  
The active status display informs the user about the usability of the device and battery. Automatic self-tests are performed every day.

**6 BATTERY COMPARTMENT AND ACCESS TO SaveCard**  
Easy release to replace battery (6 year lifespan / standby) and access to SaveCard. The device automatically stores all resuscitation data on the SaveCard.

**7 LANGUAGE SELECTION**  
User instructions are selectable in 4 languages. You can select more than 40 languages.



# THE HeartSave SERIES

## KEY ADVANTAGES AT A GLANCE

### HeartSave SPEAKS YOUR LANGUAGE

Clear voice prompts safely guide you through the rescue procedure and are available in a range of 40 different languages.

### HeartSave IS FAST

The device turns on automatically as soon as the cover has been removed and rhythm analysis starts immediately, after fixing the electrodes (SavePads).

### HeartSave IS RELIABLE

Clear, intuitive user interface, routine self-tests, protection against splash water, dust (IP55) and salt fog, extremely robust.

### HeartSave IS SAFE

- ▶ **Thanks to sophisticated CCD technology from PRIMEDIC**  
Defibrillation can be individually adjusted and is safe for the heart muscle.
- ▶ **Thanks to efficient data management**  
All relevant data (ECG, buttons pressed, defibrillations) is recorded and is immediately visible using the read-out software (AED, AS, optional with PAD).
- ▶ **Thanks to its update capability**  
Software updates are easy to install via the SaveCard (memory card).
- ▶ **Thanks to clear status information**  
The active status display provides up-to-date information on the usability of the device and battery.
- ▶ **Thanks to a long battery life**  
High-performance lithium batteries last 3 (PAD / standby) to 6 (AED, AS / standby) years.



Here you can find further information regarding our HeartSave product line: technical data, brochures and the PRIMEDIC video.



# TRAINING FOR INCREASED SAFETY

## REALISTIC TRAINING OPPORTUNITIES AND COURSES FOR FIRST AIDERS

All PRIMEDIC defibrillators for first aiders are very easy to use. Nevertheless, thorough training and regular courses can teach them to use the device both quickly and efficiently in an emergency. PRIMEDIC offers a proven, user-friendly AED training device with six real-life scenarios for teachers and instructors. An additional advantage: this training device has low operating costs. Semi-automatic and fully automatic versions of the training device are available. A remote control helps teachers adjust exercises to their lessons using the identical training equipment, as well as enabling them to confront participants with unexpected situations.

## CPR-PRIME AND THE ERC RECOMMENDATIONS „THE PERIOD BETWEEN THE END OF A HEART PRESSURE MESSAGE AND THE SHOCK DELIVERY SHOULD BE KEPT AS SHORT AS POSSIBLE.“

(Dr. Eftesol et al., Circulation, 2002)

As the world's only manufacturer to use this approach, PRIMEDIC truly fulfils the requirements of the ERC guidelines concerning the shortest possible CPR interruption<sup>1</sup> through its unique cpr-PRIME algorithm.

cpr-PRIME reduces the so-called peri-shock-pause to a minimum and thus improves the survival chances of the affected person<sup>1</sup>

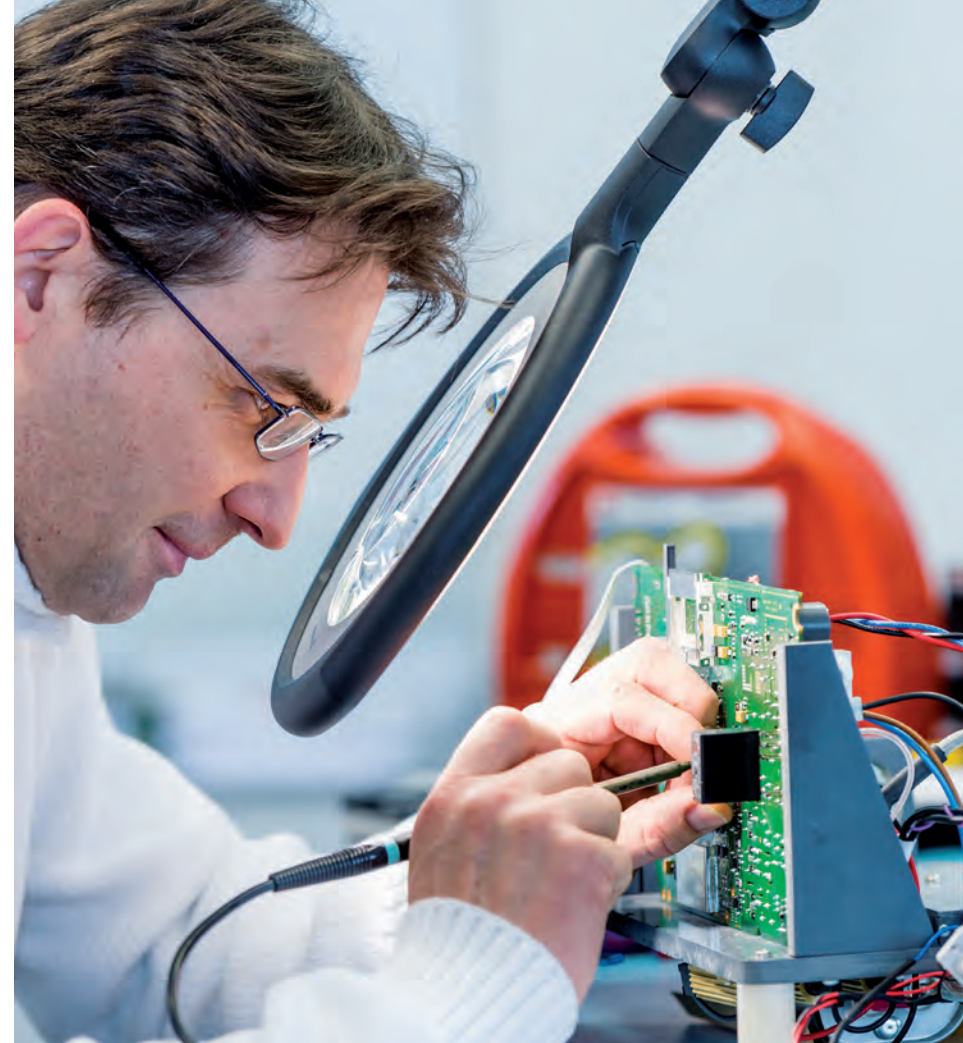
# AFTER-SALES SERVICE

## WE ARE ALWAYS ON HAND TO HELP

- ▶ Customer service on the phone, by email or in person
- ▶ Remote diagnostics possible
- ▶ Technical safety checks
- ▶ Device upgrades
- ▶ Software updates (e.g. ERC Guidelines) can be easily performed by the user
- ▶ Accessories available from stock
- ▶ Repairs
- ▶ Service training courses for authorised partners

## IT IS IMPORTANT TO US TO HAVE A GOOD RELATIONSHIP WITH OUR CUSTOMERS

Our relationship with you doesn't end once your purchase is complete! Our skilled and experienced PRIMEDIC customer service staff and our partner companies are always on hand to help you. Service technicians carry out all repairs on any PRIMEDIC devices either at our headquarter or at authorized service partners.



You can also let the professionals perform any necessary technical safety checks. Quick response and processing times and technically experienced customer support on the phone and by email are taken seriously at PRIMEDIC. To top it off, the service team provides our partner companies with training courses in the field of technical safety checks.

# ACCESSORIES

## BATTERY

3-year battery PAD / standby  
6-year battery AS, AED / standby



## SaveCard (medium for data storage)



## ROTAID

Wallmount Rotaid Plus with and without alarm function



## SaveBox

Wallmount magnetic lock included, optionally with alarm function (SaveBox Advanced)



## WALL MOUNT

Vehicle certification in line with EN1789



## LOCATION SIGNS



### SavePads PreConnect

Accessories included (razor, breathing mask, scissors and gloves)



### TRAINING DEVICE



### CARRY BAG



### ACCESSORIES BAG

AED front



## Head office / Product location

### **METRAX GmbH**

Rheinwaldstr. 22

D-78628 Rottweil

Germany

Phone: +49 741 257-0

Fax: +49 741 257-235

[www.primedic.com](http://www.primedic.com)

[info@primedic.com](mailto:info@primedic.com)

[www.primedic.com](http://www.primedic.com)



**PRIMEDIC**  
Saves Life. Everywhere.