

# Canon



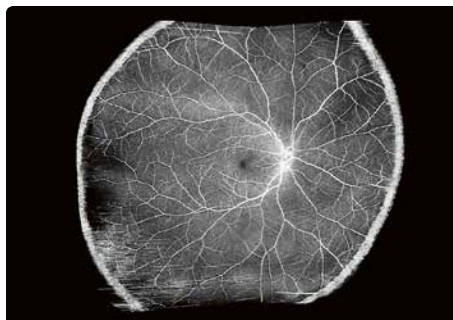
## *Xephilio OCT-S1*

## Wide field swept source imaging in one single shot

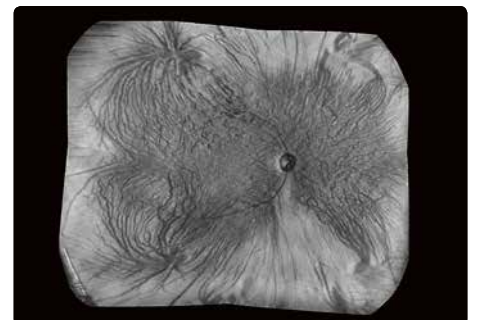
With Xephilio OCT-S1 Canon introduces revolutionary swept source technology allowing you to capture wide-field images of up to 23 mm in a single scan. Xephilio OCT-S1 enables superior penetration of dense objects and provides outstanding tomographic images. Intelligent Denoise, the system's Deep Learning AI technology, offers a new quality of OCTA images in a single scan with greatly reduced noise, increased detail and improved visibility within just seconds.



23 mm wide-field OCT B-scan image



31x27 mm OCTA mosaic image



Wide en-face OCT mosaic image

# Xephilio OCT-S1

## Faster

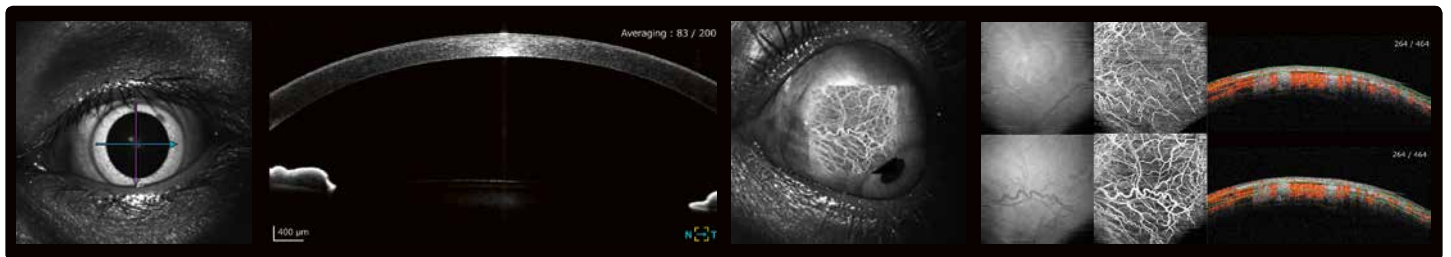
100,000 A-scans per second combined with invisible 1,060 nm wavelength provide ultra-fast swept source technology maximizing data quantity of the patient's eye while reducing acquisition time. Invisible scan lines ensure better patient collaboration and reduce the impact of patient eye movements.

## Deeper

Canon's deep scanning swept source technology allows better penetration of cataracts, hemorrhages, blood vessels and sclera and at the same time optimizes capture of retinal and choroidal data – all in a single shot. With Xephilio OCT-S1 vitreous body and choroid appear in the same image with superior image quality providing more information for better patient care.

## Wider

With a single capture the swept source Xephilio OCT-S1 shows a large wide-field OCT image as wide as 23x20 mm, which can be very beneficial for retina thickness observation of retinal detachment or retinitis pigmentosa. Mosaic imaging allows you to create an incredible 31 x 27 mm wide field OCT image.



**CANON MEDICAL SYSTEMS EUROPE B.V.**

<https://eu.medical.canon>

©Canon Medical Systems Corporation 2019. All rights reserved.  
Design and specifications subject to change without notice.  
MSSEC0001EUC 2019-08 CMSE/Printed in Europe

Made for Life is a trademark of Canon Medical Systems Corporation.

Some features presented in this brochure may not be commercially available on all systems shown or may require the purchase of additional options. Please contact your local Canon Medical Systems representative for details.

*Made For life*